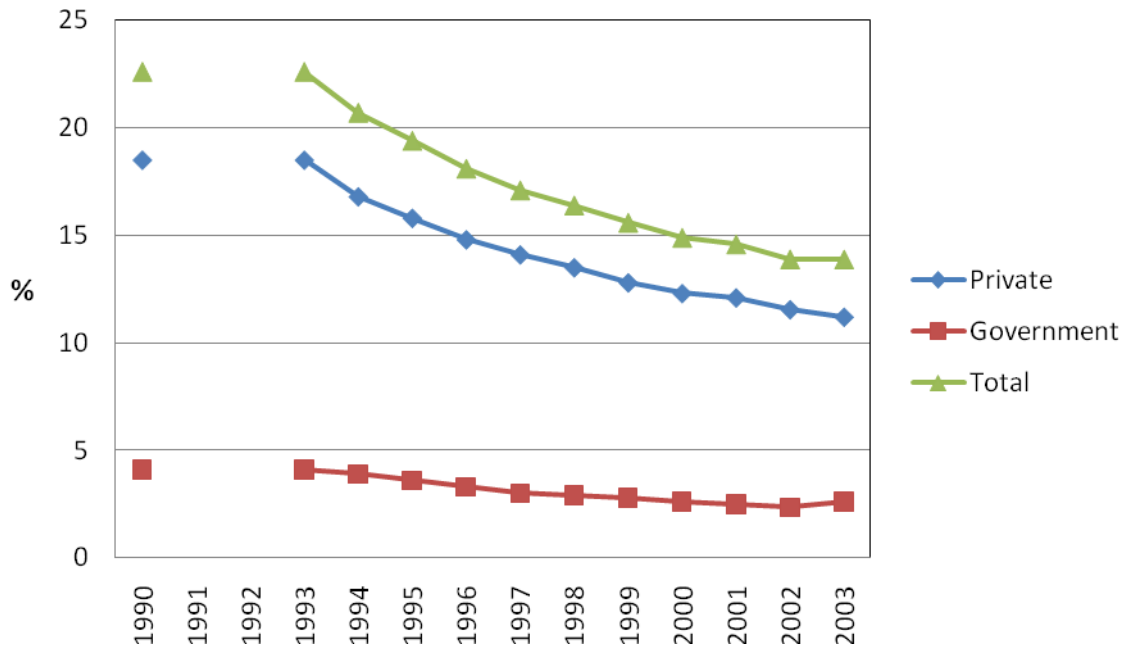
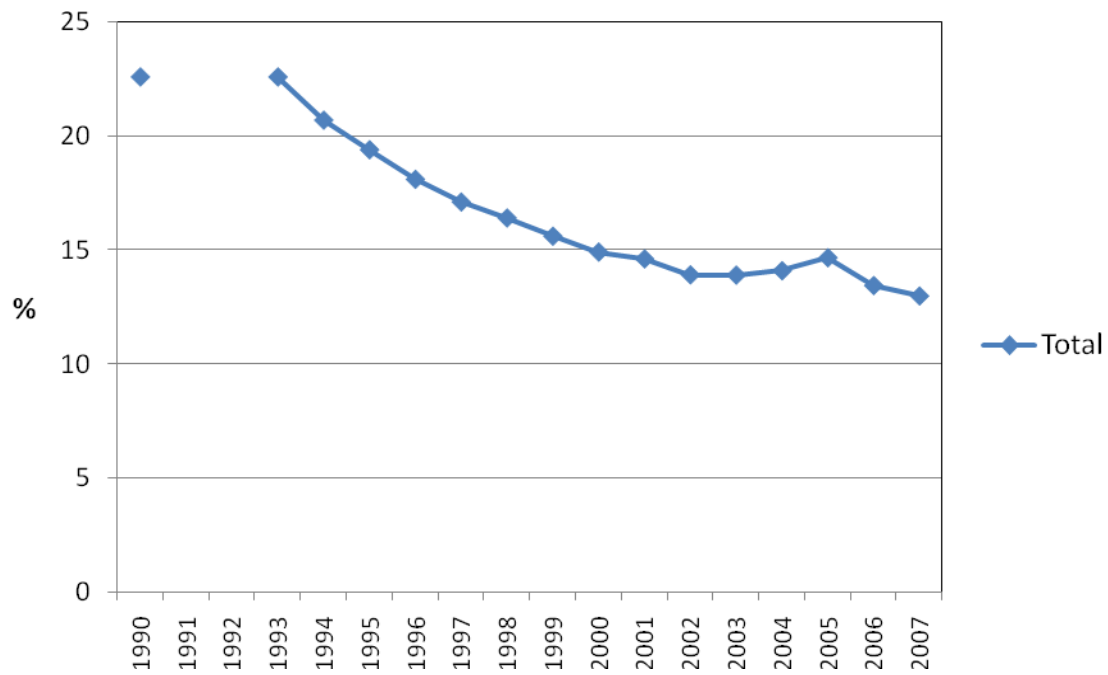


Figure 31:

% of private and public sector employees in employer occupational superannuation schemes, 1990-2007



Year	Private	Government	Total
1990	18.5	4.1	22.6
1991	-	-	-
1992	-	-	-
1993	18.5	4.1	22.6
1994	16.8	3.9	20.7
1995	15.8	3.6	19.4
1996	14.8	3.3	18.1
1997	14.1	3	17.1
1998	13.5	2.9	16.4
1999	12.8	2.8	15.6
2000	12.3	2.6	14.9
2001	12.1	2.5	14.6
2002	11.55	2.35	13.9
2003	11.2	2.6	13.89



Year	Total
1990	22.6
1991	-
1992	-
1993	22.6
1994	20.7
1995	19.4
1996	18.1
1997	17.1
1998	16.4
1999	15.6
2000	14.9
2001	14.6
2002	13.9
2003	13.89
2004	14.08
2005	14.65
2006	13.43
2007	12.97

Source: Report of the Government Actuary for the year ended 30 June 2008.