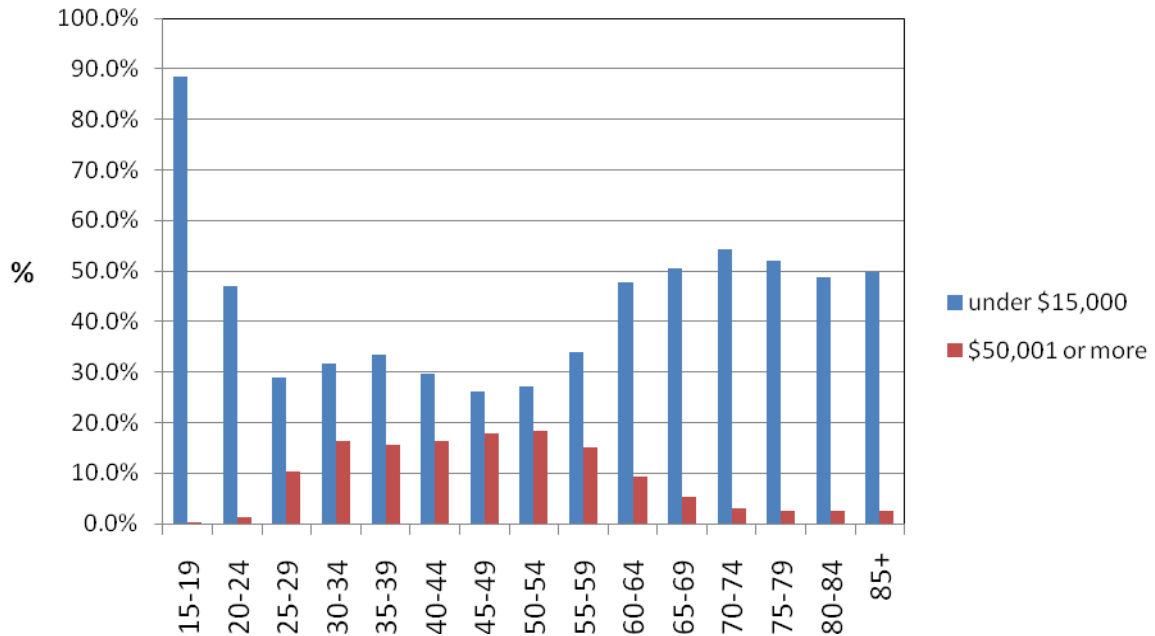


Figure 37:

Proportion of women in each age group earning under \$15,001 or over \$50,001 per year, 2006



Age	<\$15,000	\$50,001+
15-19	88.4%	0.1%
20-24	47.1%	1.3%
25-29	29.0%	10.4%
30-34	31.8%	16.3%
35-39	33.4%	15.6%
40-44	29.6%	16.4%
45-49	26.2%	17.9%
50-54	27.1%	18.4%
55-59	34.0%	15.1%
60-64	47.8%	9.5%
65-69	50.6%	5.4%
70-74	54.3%	3.0%
75-79	52.1%	2.5%
80-84	48.9%	2.7%
85+	49.9%	2.6%

Source: 2006 Census of Population and Dwellings, Statistics New Zealand. Customized data order.