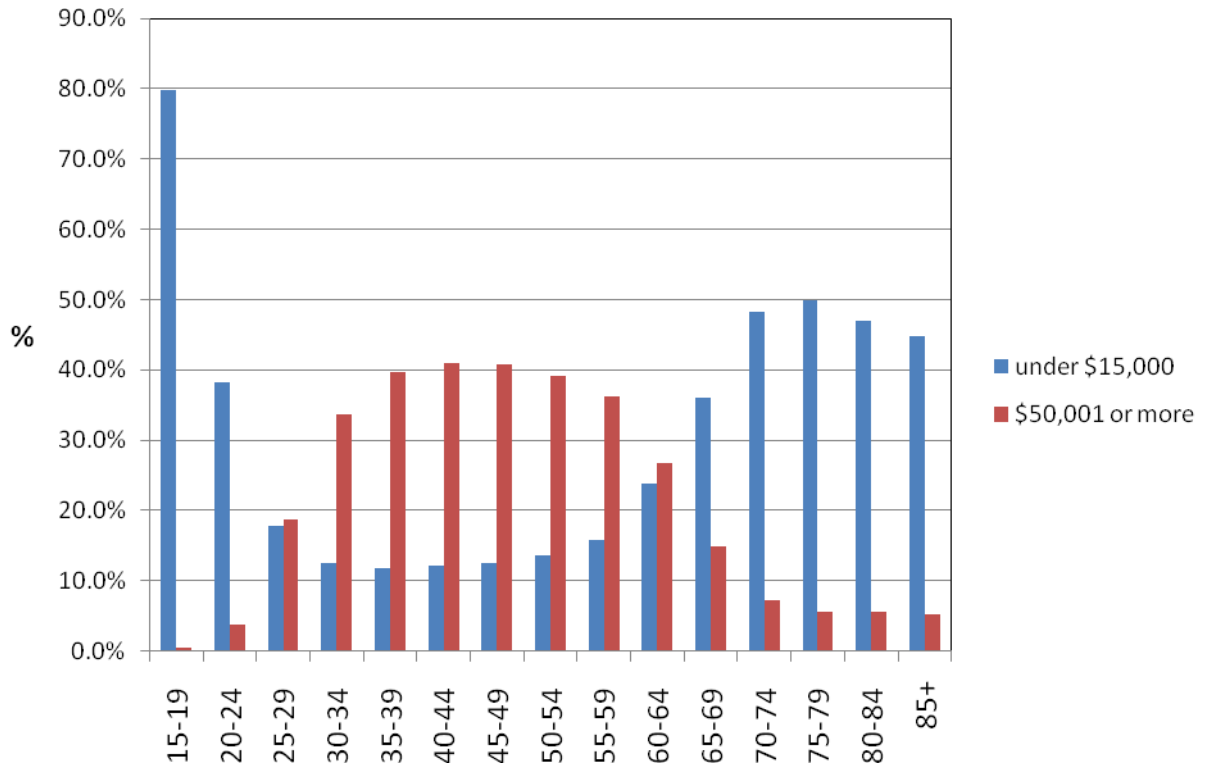


Figure 36:

Proportion of men in each age group earning under \$15,001 or over \$50,001 per year, 2006.



Age	<\$15,000	\$50,001+
15-19	79.9%	0.4%
20-24	38.1%	3.7%
25-29	17.8%	18.7%
30-34	12.5%	33.6%
35-39	11.7%	39.7%
40-44	12.1%	41.0%
45-49	12.4%	40.8%
50-54	13.6%	39.1%
55-59	15.7%	36.1%
60-64	23.8%	26.6%
65-69	36.1%	14.9%
70-74	48.3%	7.2%
75-79	49.9%	5.6%
80-84	47.0%	5.5%
85+	44.8%	5.2%

Source: 2006 Census of Population and Dwellings, Statistics New Zealand. Customized data order.