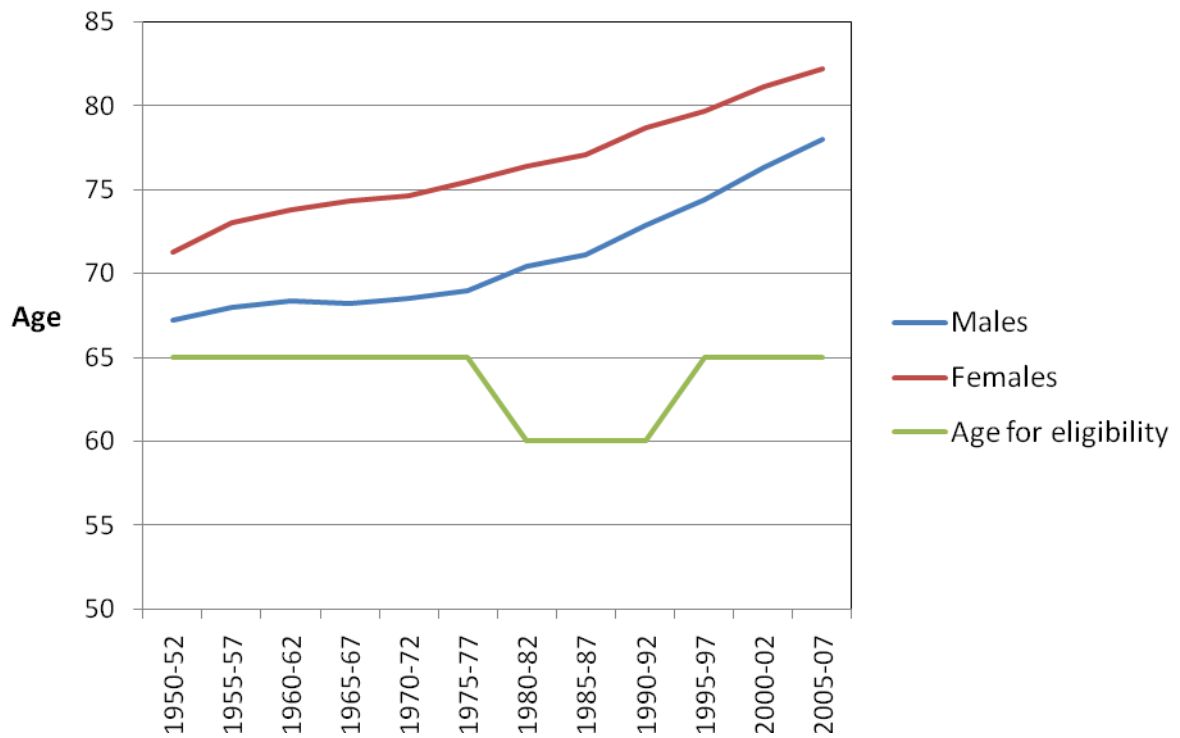


**Figure 33:**

### Life expectancy at birth and age of eligibility for universal superannuation



	<b>Males</b>	<b>Females</b>	<b>Age for eligibility</b>
<b>1950-52</b>	67.2	71.3	65
<b>1955-57</b>	68	73	65
<b>1960-62</b>	68.4	73.8	65
<b>1965-67</b>	68.2	74.3	65
<b>1970-72</b>	68.5	74.6	65
<b>1975-77</b>	69	75.5	65
<b>1980-82</b>	70.4	76.4	60
<b>1985-87</b>	71.1	77.1	60
<b>1990-92</b>	72.9	78.7	60
<b>1995-97</b>	74.4	79.7	65
<b>2000-02</b>	76.3	81.1	65
<b>2005-07</b>	78	82.2	65

Source: New Zealand Period Life Tables: 2005-07. Statistics New Zealand.