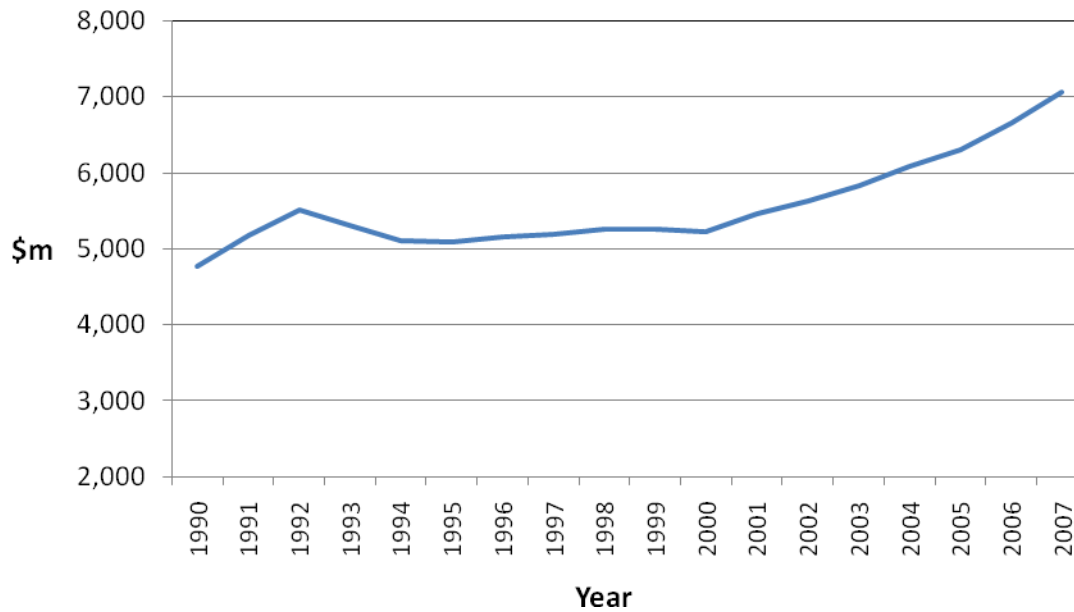


Figure 30:

**Total Expenditure on New Zealand Superannuation,
1990-2007.**



Year	NZ Superannuation (\$m)
1990	4,775
1991	5,174
1992	5,514
1993	5,316
1994	5,103
1995	5,083
1996	5,158
1997	5,187
1998	5,263
1999	5,253
2000	5,228
2001	5,457
2002	5,638
2003	5,831
2004	6,085
2005	6,307
2006	6,658
2007	7,068

Source: Ministry of Social Development, Statistical Report for the year ending June 2007.