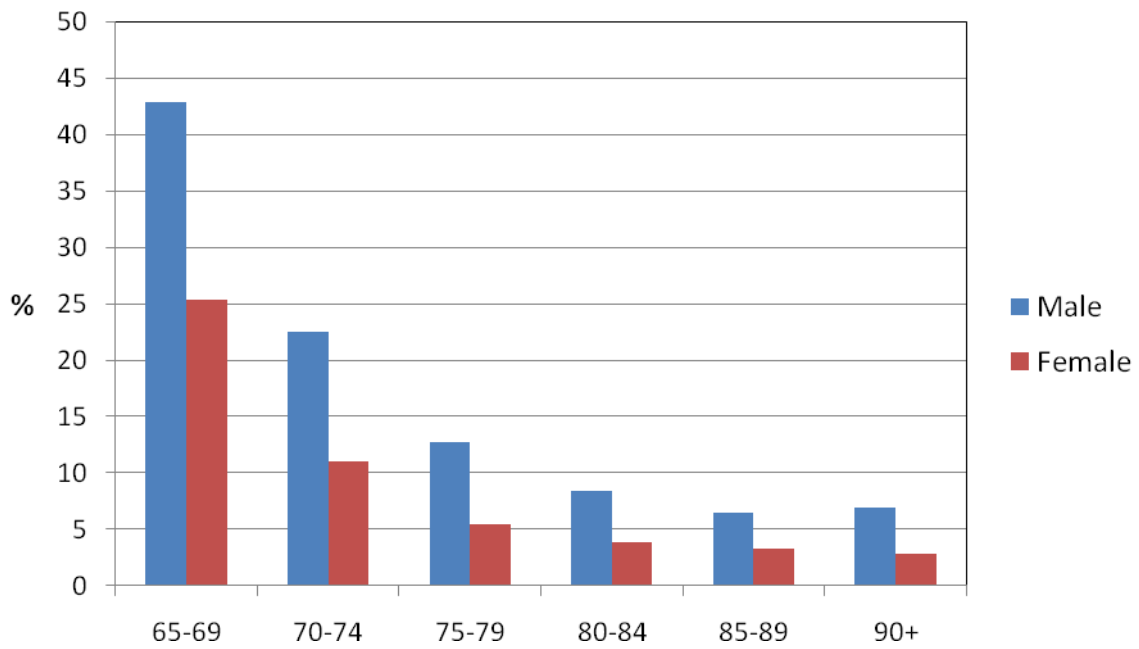


Figure 16:

**Percentage of women and men 65+ employed
in each age group, 2006**



Age	Male	Female
65-69	42.9%	25.3%
70-74	22.5%	11%
75-79	12.7%	5.4%
80-84	8.4%	3.8%
85-89	6.5%	3.3%
90+	6.9%	2.8%

Source: New Zealand's 65+ Population: A Statistical Volume (2007), Chapter 4, Table 4.04. Statistics New Zealand.