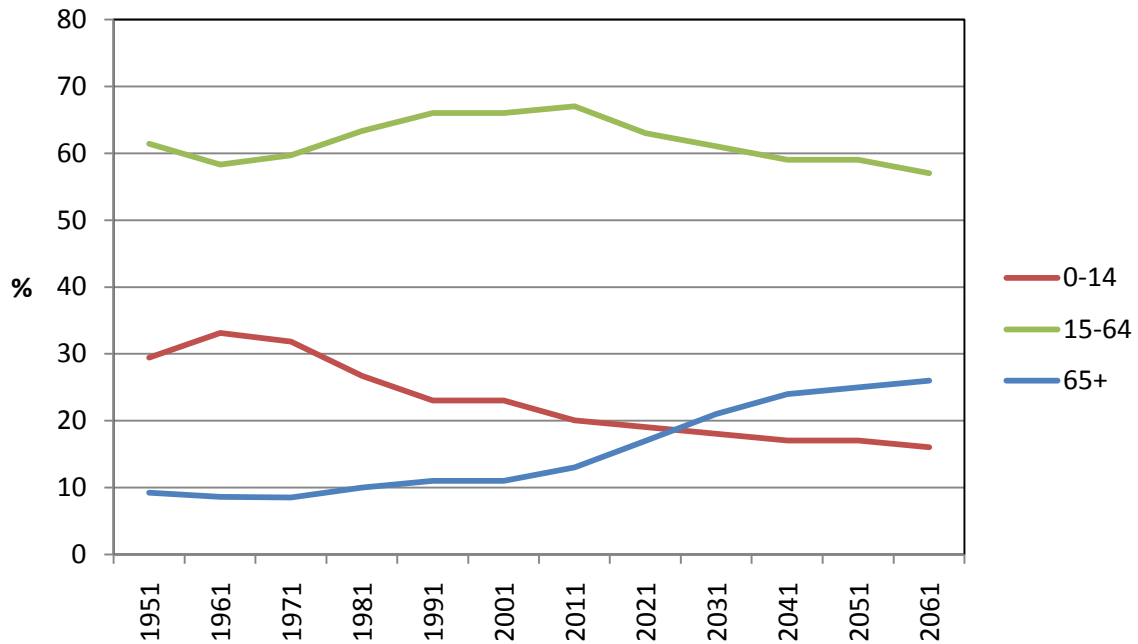


Figure 5:

Long term series of % of population in three main age groups, 1951-2061, Series 5 projections



Age group	1951	1961	1971	1981	1991	2001	2011	2021	2031	2041	2051	2061
0-14	29.4	33.1	31.8	26.7	23	23	20	19	18	17	17	16
15-64	61.4	58.3	59.7	63.3	66	66	67	63	61	59	59	57
65+	9.2	8.6	8.5	10	11	11	13	17	21	24	25	26

Source: National Population Projections, 2006(base)-2061. Statistics New Zealand.