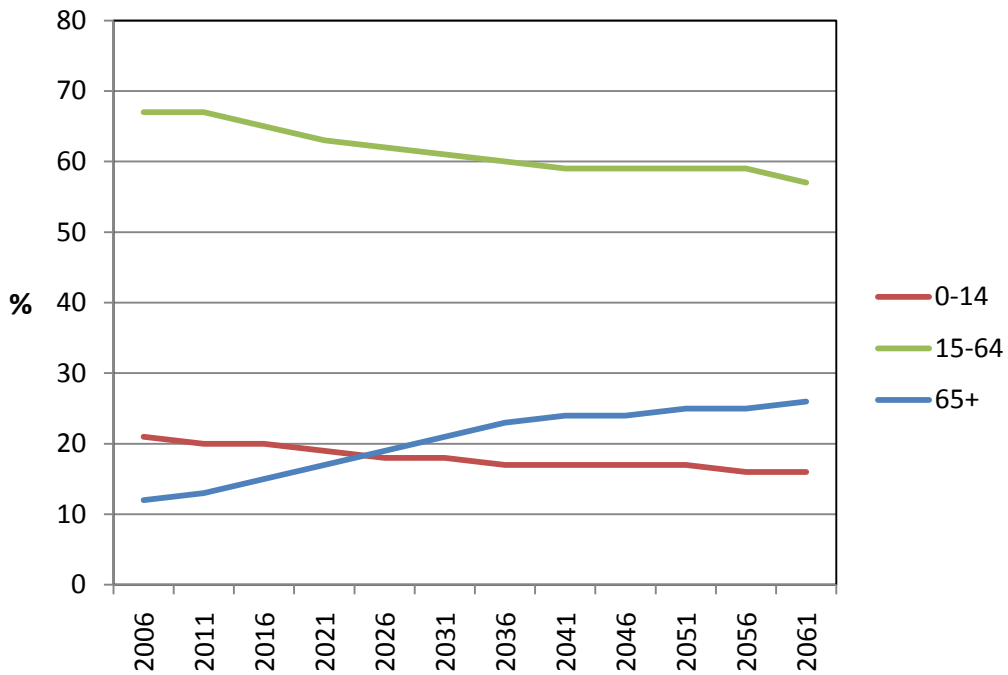


Figure 4:

**Percentage of the population in three main age groups,
Series 5 projections: 2006(base)-2061.**



Year at 30th June	0-14	15-64	65+
2006	21%	67%	12%
2011	20%	67%	13%
2016	20%	65%	15%
2021	19%	63%	17%
2026	18%	62%	19%
2031	18%	61%	21%
2036	17%	60%	23%
2041	17%	59%	24%
2046	17%	59%	24%
2051	17%	59%	25%
2056	16%	59%	25%
2061	16%	57%	26%

Source: National Population Projections, 2006(base)-2061. Statistics New Zealand.